



CATERPILLAR 330GC

Major Service

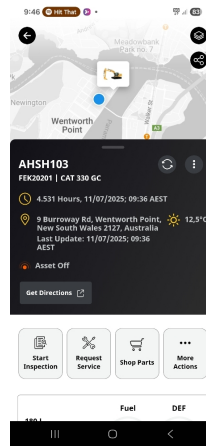
● 2 ● 6 ● 83 ● 12

Inspection Number	RP049615	Customer No	
Serial Number	FEK20201	Customer Name	
Make	CATERPILLAR	Customer Email	
Model	CAT330 GC	Works Order	RP049615
Equipment Family	30.1-34.9T HYDRAULIC EXCAVATOR	Completed On	11/07/2025 9:45:46 AM
Asset ID	AHSH103	Inspector	Jake Raffen
Location	Ford Civil 11 Burroway Road Wentworth Point 2565	PDF Generated On	11/07/2025
		Machine Hours	4531
		Next Meter	4450
Customer			

General Info & Comments

General Info/Comments

500hr service.
Repaired missing grease nipple on bucket pivot pin.
B3064LR requires new cutting edge hardware as some are loose and no longer able to be tighten. L/H joystick requires button replacements



Machine Hours	4531
Next Service Due Hours	4750

TASK SAFETY INSTRUCTIONS

1.1 Wear Correct PPE at all times	NORMAL
1.2 All isolation and safe work procedures must be followed	NORMAL

<input checked="" type="radio"/>	1.3 Identify task hazards and controls utilising hierarchy or controls model	NORMAL
<input checked="" type="radio"/>	1.4 Ensure a competent operator and spotter is utilised to move mobile equipment	NORMAL
<input checked="" type="radio"/>	1.5 Ensure all mobile equipment is fundamentally stable	NORMAL
<input checked="" type="radio"/>	1.6 Ensure three points of contact is maintained during access and egress	NORMAL
<input checked="" type="radio"/>	1.7 Ensure acceptable housekeeping standards are maintained at all times	NORMAL

MACHINE GENERAL RUNNINGCHECKS

<input checked="" type="radio"/>	2.1 Check all work lights, beacon & reverse alarmfor operation	PASS
<input checked="" type="radio"/>	2.2 Test all dash warning lights, gauges and audible alarms for correct operation	PASS
<input type="radio"/>	2.3 Check idle timer for correct shut down operation	N/A
<input checked="" type="radio"/>	2.4 Check operation of all three emergency stop buttons	PASS
<input checked="" type="radio"/>	2.5 Check operation of horn	PASS
<input checked="" type="radio"/>	2.6 Check operation of reverse camera	PASS
<input checked="" type="radio"/>	2.7 Check alternator charge voltage - ACTUAL_____V	PASS
<input type="radio"/>	2.8 Check operation of auto grease systemby manually activating timer	N/A
<input type="radio"/>	2.9 Check fire systemcontrol panel for 'Normal'	N/A

PM FIRE SUPPRESSION SYSTEM

<input type="radio"/>	5.1 Ensure fire suppression bottle and components are securely mounted and in good condition	N/A
<input type="radio"/>	5.2 Ensure fire suppression is correctly charged	N/A
<input type="radio"/>	5.3 Inspect last charge date - ACTUAL _____	N/A
<input checked="" type="radio"/>	5.4 Check all fire extinguishers are securely mounted and in good condition	PASS
<input checked="" type="radio"/>	5.5 Check all fire extinguishers are correctly charged	PASS
<input checked="" type="radio"/>	5.6 Inspect last charge date - ACTUAL _____	PASS

PM ENGINE

● 6.1 Perform engine valve set	N/A
● 6.2 Inspect air intake system hoses, pipes, clamps for signs of dirt ingress	PASS
● 6.3 Inspect engine for oil or fuel leaks	PASS
● 6.4 Inspect engine components for missing clamps	PASS
● 6.5 Inspect exhaust system for signs of leaks, loose bolts or missing clamps	PASS
● 6.6 Inspect turbo for security and signs of leaks	PASS
● 6.7 Inspect condition of exhaust lagging	N/A
● 6.8 Inspect engine mounts for condition and loose hardware	PASS
● 6.9 Inspect alternator mount condition and adjustment	PASS
● 6.10 Inspect wiring condition and security	PASS
● 6.11 Inspect engine belts	PASS

PM ENGINE COOLING SYSTEM

● 7.1 Check coolant level	PASS
● 7.2 Check condition of radiator cap	PASS
● 7.3 Check condition of radiator core	PASS
● 7.4 Check cooling system for signs of leaks	PASS
● 7.5 Check hose and clamp condition	PASS
● 7.6 Inspect fan condition and operation	PASS
● 7.7 Inspect radiator and fan guard condition	PASS

PM SWING TRANSMISSION

● 8.1 Inspect swing transmission for signs of leaks	PASS
● 8.2 Inspect swing transmission oil level	PASS

PM HYDRAULIC SYSTEM

● 9.1 Check hydraulic oil level	PASS
● 9.2 Inspect hydraulic cylinders for leaks and security	PASS
● 9.3 Inspect hydraulic hoses for leaks, damage, security	PASS
● 9.4 Inspect hydraulic pump condition, leaks, security	PASS
● 9.5 Check Pilot Accumulator operation as per OEM Maintenance Procedure - Test Boom Down Functionality with engine off	PASS

PM FINAL DRIVES

● 10.1 Inspect LHS final drive mount condition for leaks and security	PASS
● 10.2 Inspect LHS oil level and mag plug condition	PASS
● 10.3 Inspect RHS final drive mount condition for leaks and security	PASS
● 10.4 Inspect RHS oil level and mag plug condition	PASS

PM UNDERCARRIAGE

● 11.1 Inspect LHS track tension	PASS
● 11.2 Inspect RHS track tension	PASS
● 11.3 Inspect tracks for loose/missing bolts	PASS
● 11.4 Inspect load and carrier rollers for signs of leaks	PASS
● 11.5 Inspect idlers for signs of leaks	PASS
● 11.6 Inspect sprocket segments condition	PASS
● 11.7 Inspect track frame for cracks, lose or missing hardware	PASS

PM FRAME AND BODY

● 12.1 Check panels for damage and security	PASS
● 12.2 Check access steps and walkway condition	PASS

●	12.3 Inspect boom condition – cracks, missing clamps, damaged pipes, excessive movement, lubrication	PASS
●	12.4 Inspect stick condition – cracks, missing clamps, damaged pipes, excessive movement, lubrication	PASS
●	12.5 Inspect quick hitch condition and operation	N/A
●	12.6 Inspect bucket condition – cracks, wear, damage, mounts	PASS
●	12.7 Inspect GET condition and hardware	FAIL

PM ELECTRICAL SYSTEM

●	13.1 Check battery condition	PASS
●	13.2 Check battery terminal condition	PASS
●	13.3 Check battery security	PASS
●	13.4 Check battery box drain is clear	PASS
●	13.5 Check wiring condition and security	PASS

PM GREASE SYSTEM

●	14.1 Check all points for acceptable lubrication	PASS
●	14.2 Inspect grease system operation	PASS
●	14.3 Check grease line condition	PASS
●	14.4 Refill grease tank	N/A
●	14.5 Lubricate bucket linkage	PASS
●	14.6 Lubricate blade linkage	PASS
●	14.7 Lubricate boom & stick linkage	PASS
●	14.8 Lubricate swing bearing	PASS

PM OPERATOR STATION

●	15.1 Check all doors for correct opening and closing adjustments and operation	PASS
---	--	------

●	15.2 Inspect condition of door seals	PASS
●	15.3 Check window glass and seal condition	PASS
●	15.4 Check mirror condition and adjustments	PASS
●	15.5 Fill window washer reservoir	N/A
●	15.6 Inspect air con vents condition	PASS
●	15.7 Inspect seat belt and mounting hardware	PASS
●	15.8 Inspect seat condition, operation and mounting	PASS
●	15.9 Replace cabin A/C filter	N/A

OIL SAMPLING

●	16.1 Engine	PASS
---	-------------	------

PM POST SERVICE INSPECTION CHECKS

●	17.1 All inspections have been completed and rectified as required	NORMAL
●	17.2 All safety related defects have been repaired or reported	NORMAL
●	17.3 All defects have been noted and reported	NORMAL
●	17.4 All fluids are at correct level and drain plugs tight	NORMAL
●	17.5 All oil samples have visually been inspected and any notable signs of contamination have been reported	NORMAL
●	17.6 All replaced filters have been cut and inspected and photos added to CAT Inspect and reported to supervisor	NORMAL
●	17.7 Machine has been recommissioned and ready for operation	NORMAL
●	17.8 PM service notification marked off in Vision Link	NORMAL

DEFECTS IDENTIFIED

●	18.1 DEFECTS IDENTIFIED	FAIL
---	-------------------------	------

OIL USED



Australian Hammer Supplies Hire
Unit 3/32 Williamson Road
Ingleburn
NSW 2565

● 19.1 Hydraulic oil	10
● 19.2 Enggine oil	25
● 19.3 Slew oil	0
● 19.4 Gear oil	0